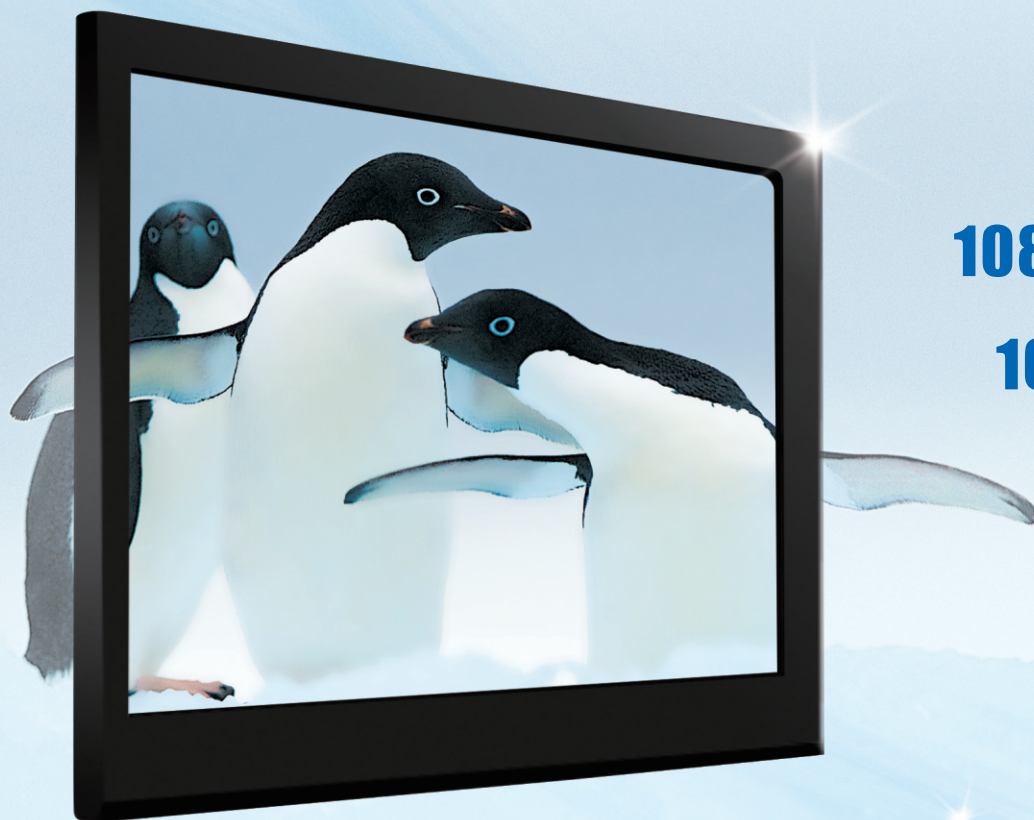


TVT

Secure The World With You

HDCCTV
Over Coax



1080P DISPLAY

1080P Lite RECORD

1080P Lite PLAYBACK



TD-2700AS-CL

TVT

TVT DIGITAL TECHNOLOGY CO., LTD.

Address: 5F, North Block, CE Lighting House, Hi-Tech Park, Nanshan District, Shenzhen, Guangdong Province, P.R.China 518057

Tel: +86-755-3330 6001

Fax: +86-755-3330 6002

Web site: www.tvt.net.cn

E-mail: overseas@tvt.net.cn



HD



H.264



DDNS



Network



PTZ



Audio



MIC



Mobile



CMS



USB



Mouse



E-mail

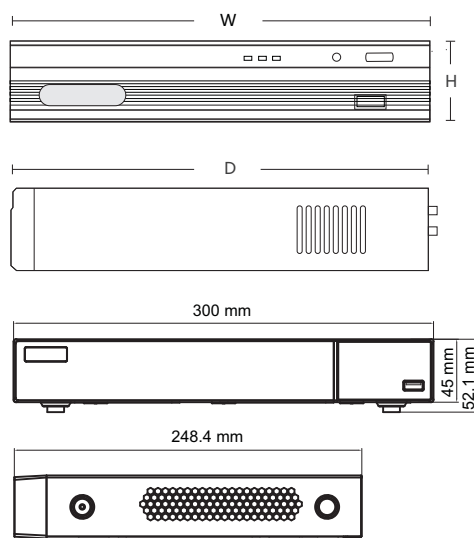
Introduction

TD-2700AS-CL series are standard 8 / 16 CH 1080P Lite high definition hybrid DVRs with ability to connect analog and IP cameras simultaneously, which adopt the standard H.264 high profile compression format and the most advanced SOC technique to ensure real time recording in each channel and realize outstanding robustness of the system. TD-2700AS-CL support 8 / 16 CH video input, 1 CH audio input, simultaneous 8 / 16 CH real time playback. The series of product can meet different security requirements of home, financial, commerce, enterprise, transportation and government, etc.

Characteristics

- 8 / 16 CH AHD video input
- 8 / 16 CH 1080P Lite / 720P / 720P Lite / WD1 recording
- 8 CH DVR supports 1 CH IPC 1080P / 960P / 720P recording; 16 CH DVR supports 2 CH IPC 3MP / 1080P / 960P / 720P recording
- Adopt standard H.264 high profile compression format to get high-quality video at much lower bit rate
- Intuitive and user-friendly Graphics User Interface (GUI), window style operation by mouse
- Multi-mode recording: manual / timer / motion / sensor
- Playback : 8 / 16 CH simultaneously playback
- Search: time / calendar, events (alarm, motion)
- Express and flexible backup via USB and network and so on
- Pentaplex: preview, record, playback, backup and remote access
- DHCP, DDNS, PPPoE network protocol, IE browse and CMS supported
- Remote control via IE or CMS : preview, playback, backup, PTZ and configuration
- Dual stream technology to encode recording stream and network stream respectively; network stream can be adjustable to fit bandwidth without changing recording quality
- Multi-user online simultaneously
- Authorization management, log review and device status review
- HDMI 1080P output, true high resolution display
- Support PTZ preset and auto cruise, up to 128 presets and 8 cruises
- Powerful smart phone surveillance supporting iPhone, Android
- Support NAT function, support QR code scanning by mobile phone
- Complete SDK software available, easy to integrate with other applications

Dimensions

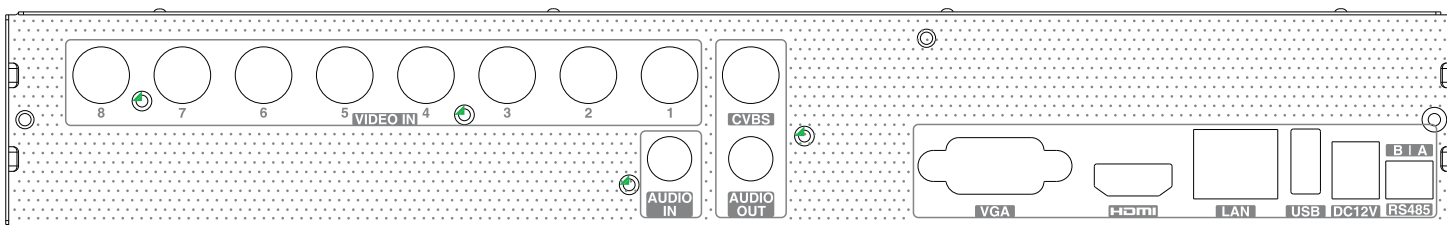
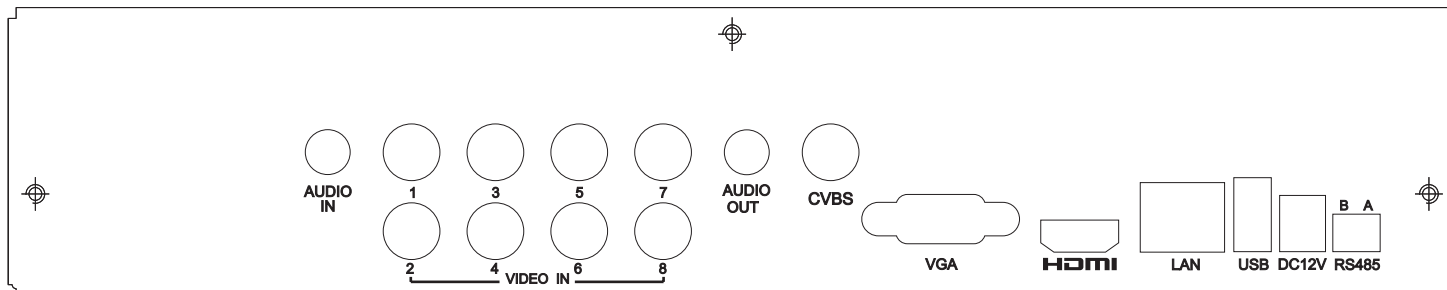
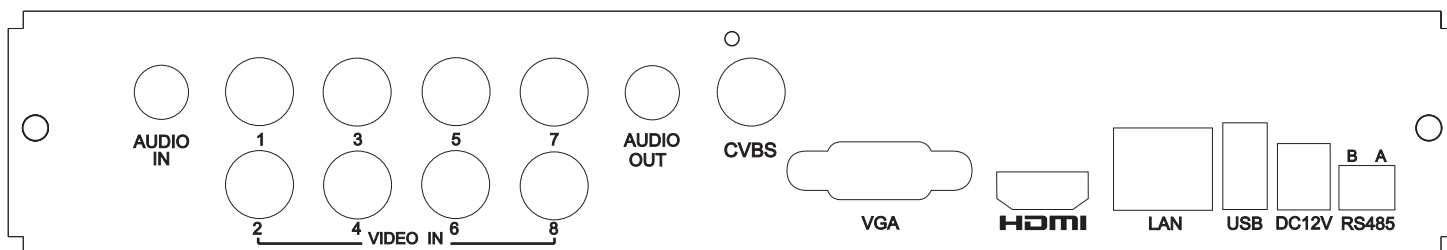


Specification

Model		TD-2708AS-CL	TD-2716AS-CL
System	Compression	Standard H.264 High Profile	
	CPU	Cortex A9	
	OS	Embedded Linux	
Video	Input	BNC × 8	BNC × 16
	Resolution	AHD 1080P Lite, 720P, WD1 real time	
	IP Input / Access Bandwidth	IPC × 1 / 6Mbps	IPC × 2 / 12Mbps
	Output	HDMI × 1 : 1920 × 1080, VGA × 1 : 1920 × 1080, BNC × 1 : CVBS (used as the main or spot output)	
IP Input	Resolution	1080P / 960P / 720P	3MP / 1080P / 960P / 720P
	Frame Rate	25fps (PAL) 30fps (NTSC)	50fps (PAL) 60fps (NTSC)
Audio	Input	RCA × 1	
	Output	RCA × 1	
	Two-way audio	Take up channel one audio input	
Record	Resolution	1080P Lite, 720P, 720P Lite, WD1	
	Frame Rate	1080P Lite / 720P : 1~12fps (PAL / NTSC) 720P Lite / WD1 : 1~real time (PAL / NTSC)	
	Bit Rate	768Kbps ~ 4Mbps	
	Encode	VBR / CBR	
	Quality	6 Level	
	Mode	Manual, timer, motion, sensor	
	File Manager	Lock, unlock	
Play back	Playback	8 CH	16 CH
	Search	Time / calendar search, event (motion, sensor)	
	Smart Search	Highlighted date and time to display the channel record	
	Function	Play, pause, FF, FB, digital zoom	
Alarm	Mode	Sensor, motion, video loss	
	Input	No	
	Output	No	
	Triggering	Record, PTZ move, e-mail, etc	
Network	Interface	RJ45 10M / 100M × 1	
	Protocol	TCP / IP, UDP, DHCP, DNS, PPPoE, DDNS	
	Others	10 users online, dual stream	
Cell Phone	OS	iPhone, Android	
	Function	Multi-screen surveillance (for certain model), record, snapshot, PTZ control, save the device list	
Port	HDD	SATA × 1	
	RS485	RS485 × 1	
	USB	USB 2.0 × 2, connect to mouse and USB backup device	
	Remote Controller	Optional	
Others	Power Supply	DC 12V	
	Consumption	≤ 5W (without HDD)	≤ 10W (without HDD)
	Dimensions (mm)	255 × 210 × 42 (W × D × H) 300 × 270 × 55 (W × D × H) 300 × 248 × 52 (W × D × H)	300 × 270 × 55 (W × D × H) 300 × 248 × 52 (W × D × H)
	Work Environment	-10 ~ 50 °C , 10% ~ 90% humidity	

Rear Panel

TD-2708AS-CL



TD-2716AS-CL

